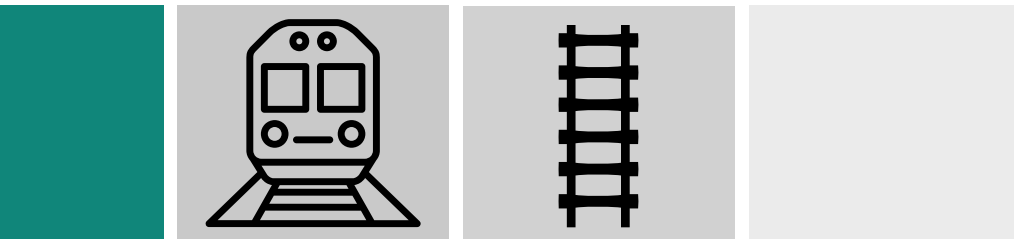


EGYPTIAN COMPANY FOR PLASTIC TECHNOLOGY

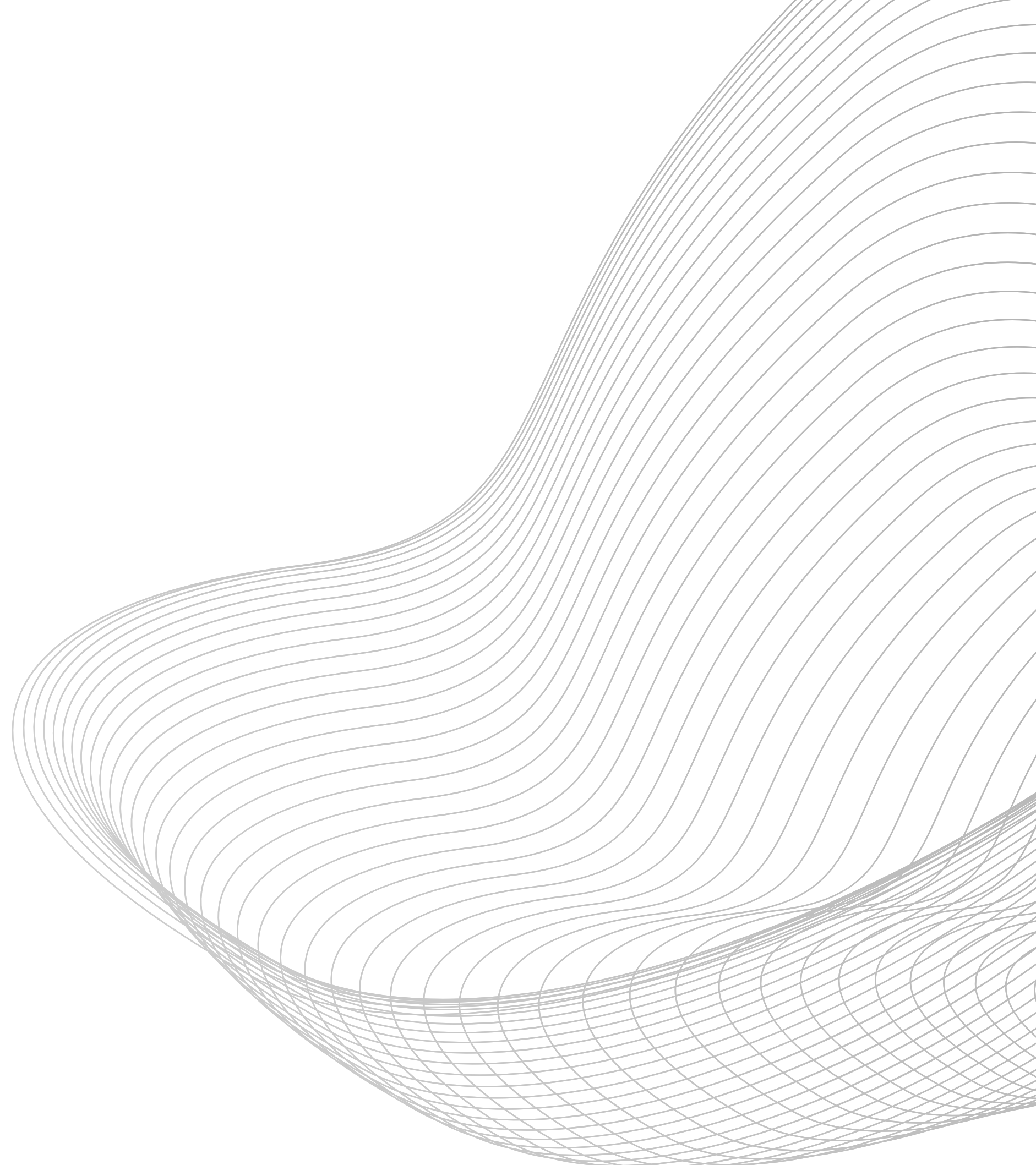
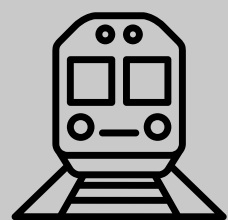
RAILWAY **BROCHURE**



ABOUT US

Nabarawi Plastics has accomplished more over the past 40 years than many of its competitors. Specializing in injection, blowing and extrusion plastic solutions. we ensure safety in the railway industries and advise you on the best possible use of materials and processing.

Nabarawi Plastics is an ISO 9001, 18001, 45001 certified company, serves its ever-growing customer base in always maintaining our reputation through hard work and commitment to our clients.

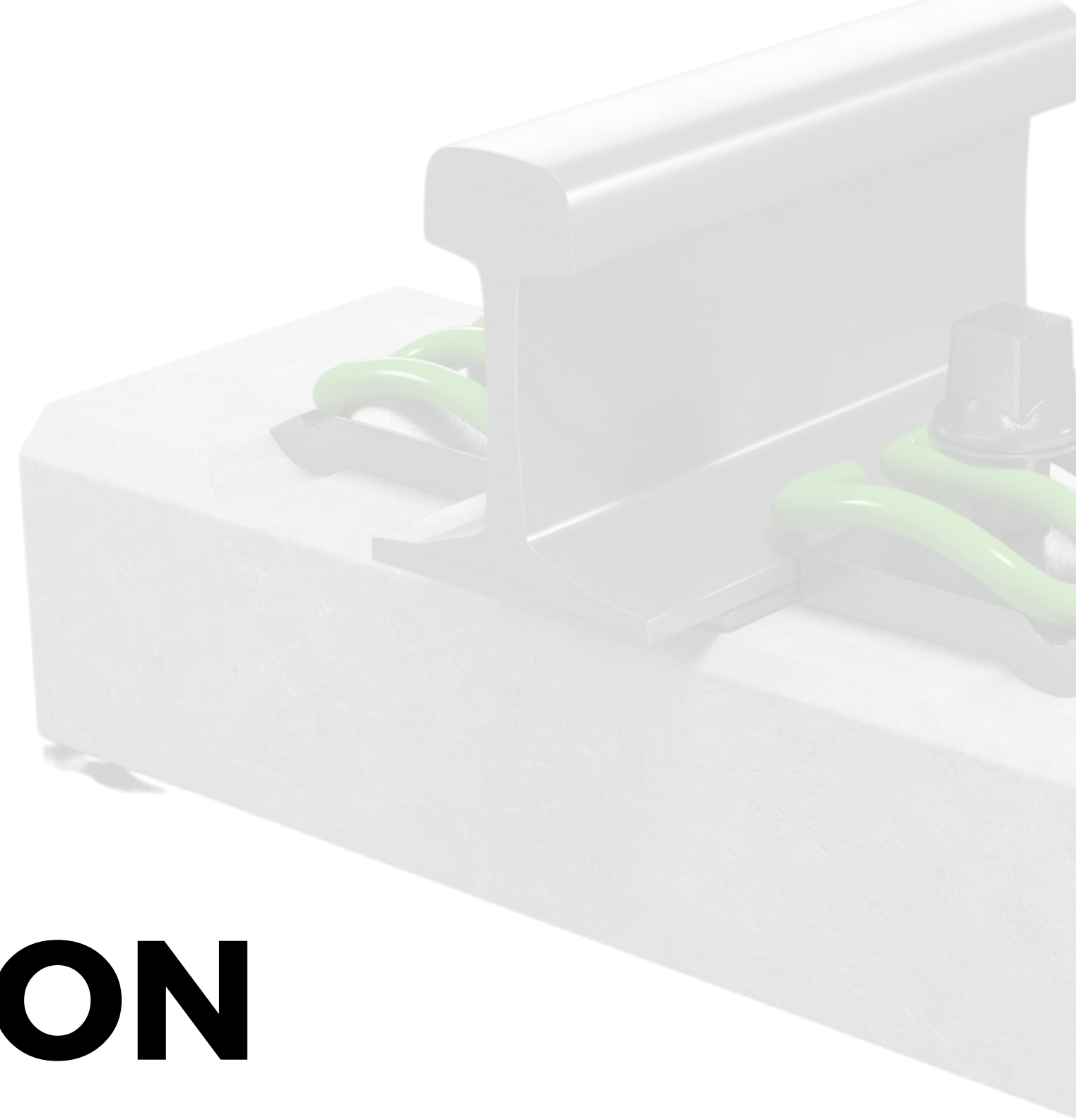


MISSION

Our mission is to exceed the expectations of our customers by delivering fast, reliable and superior solutions that are unsurpassed by our competition.

VISION

Through the extensive achievements of our highly-committed team, we strive to remain the premier choice for rapid plastics solutions.



BUSINESS PARTNERS



RAILWAY SYSTEM

SKL14

Highly elastic rail fastening for high speed and conventional rail
established solution for ballasted track with concrete sleeper

- **Sleeper Screw**

Screw spikes are used for fastening baseplates and rails to timber sleepers.

- **Tension Clip SKL 14**

For meeting the required rail creep resistance two highly elastic, With its high fatigue strength, it resists the dynamic vertical movements that are caused when the vehicle rolls over the rail. The system is maintenance-free.

- **Plastic Dowel SDU 25**

The high-quality dowels made of hightech material are extremely loadable and efficient: Lateral forces are reduced, this leads to a decrease in the load on the sleeper

- **Angled guide Wfp 14 K**

The angled guide plates lead the forces introduced into the rail by train in the concrete. In this way, the screw-dowel combinations are not loaded by shearing and bending forces. The design of the angled guide plates additionally supports the tilting protection.

- **Rail PAD**

The elasticity of the material ensures the compensation of vertical forces and with this, stable rail deflection; it also damps vibrations.



ANGLED GUIDE

Made of PA 6, Reinforced by 30% Glass Fiber.

It offers higher strength, rigidity, creep strength and dimensional stability.

Density: 1.35-1.45 gm/cm³ according to DIN EN ISO 1183

Impact strength: > 40 KJ/m² according to 150 179.

Moisture Content: 1.0 - 2.5 %



DOWEL

Made of PA6,
Polyamide is a high-tech material
with high tensile strength, high
resistant to abrasion and chemicals
and extremely loadable and efficient.
Density from 1-10 to 1-15 g/cm³
according to DIN 53479



RAIL PAD

Made of EVA (Ethylene vinyl acetate), it is an extremely elastic material, has low temperature toughness, stress-crack and UV radiation resistance.

Density 0.92 - 0.952 g/cm³ according to DIN 53479.

Melt flow rate < 5.2 g/10 min according to DIN ISO 1133

Hardness 32-47 shore (D) in according to DIN 53505



DOWEL HOLDER ANTENNA

Made of TPU 85 ShoreA

Antenna for SDU25

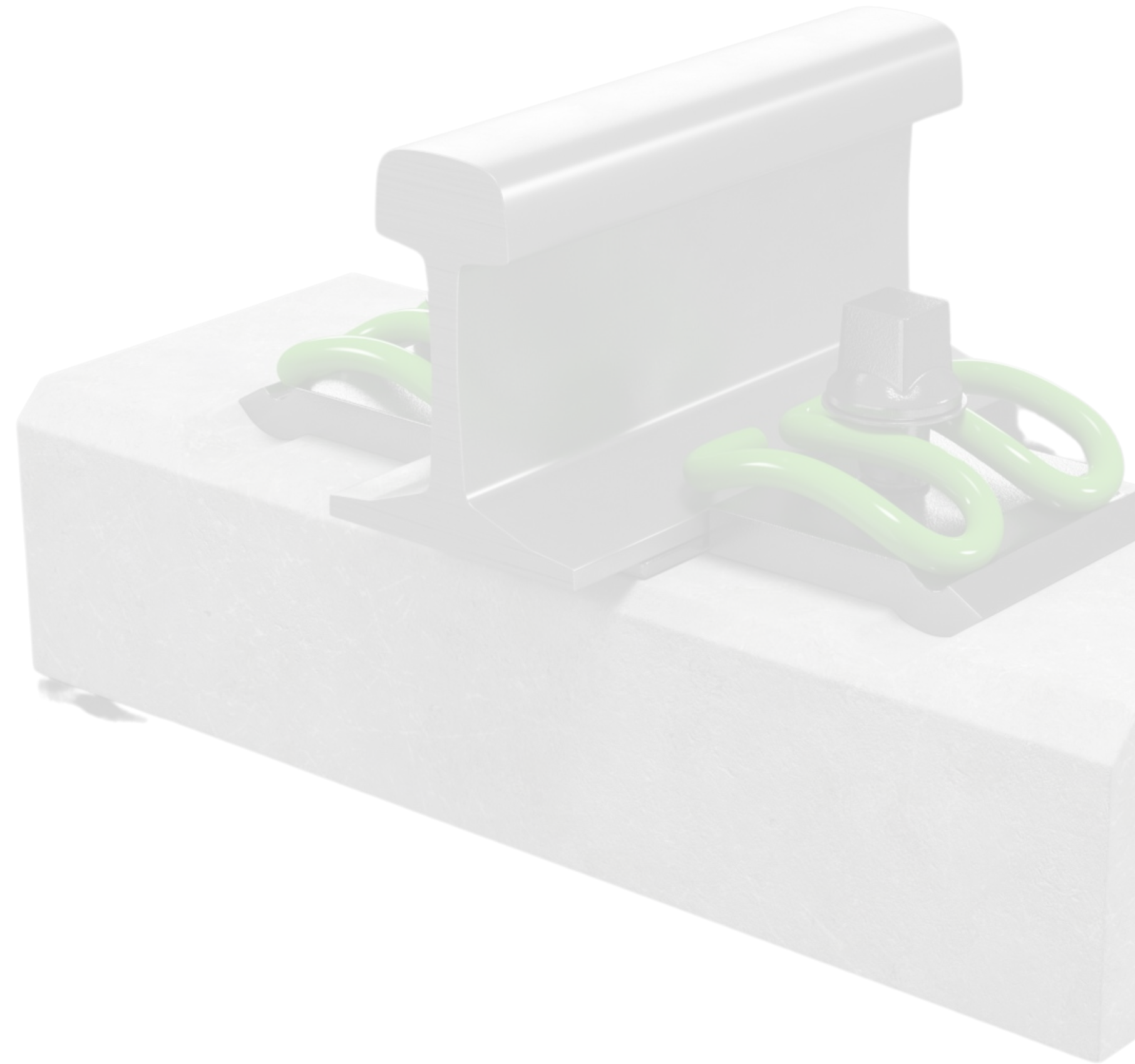
M10x40

M10x20

Colour: BLACK



CONNECT WITH US!



(+2) 010 9888 6300

www.nabarawiplast.com

info@nabarawiplast.com

egypet54@yahoo.com

PLOT 46 BELBIES INDUSTRIAL ZONE, KM5 BELBIES - 10TH OF RAMADAN ROAD, EGYPT.